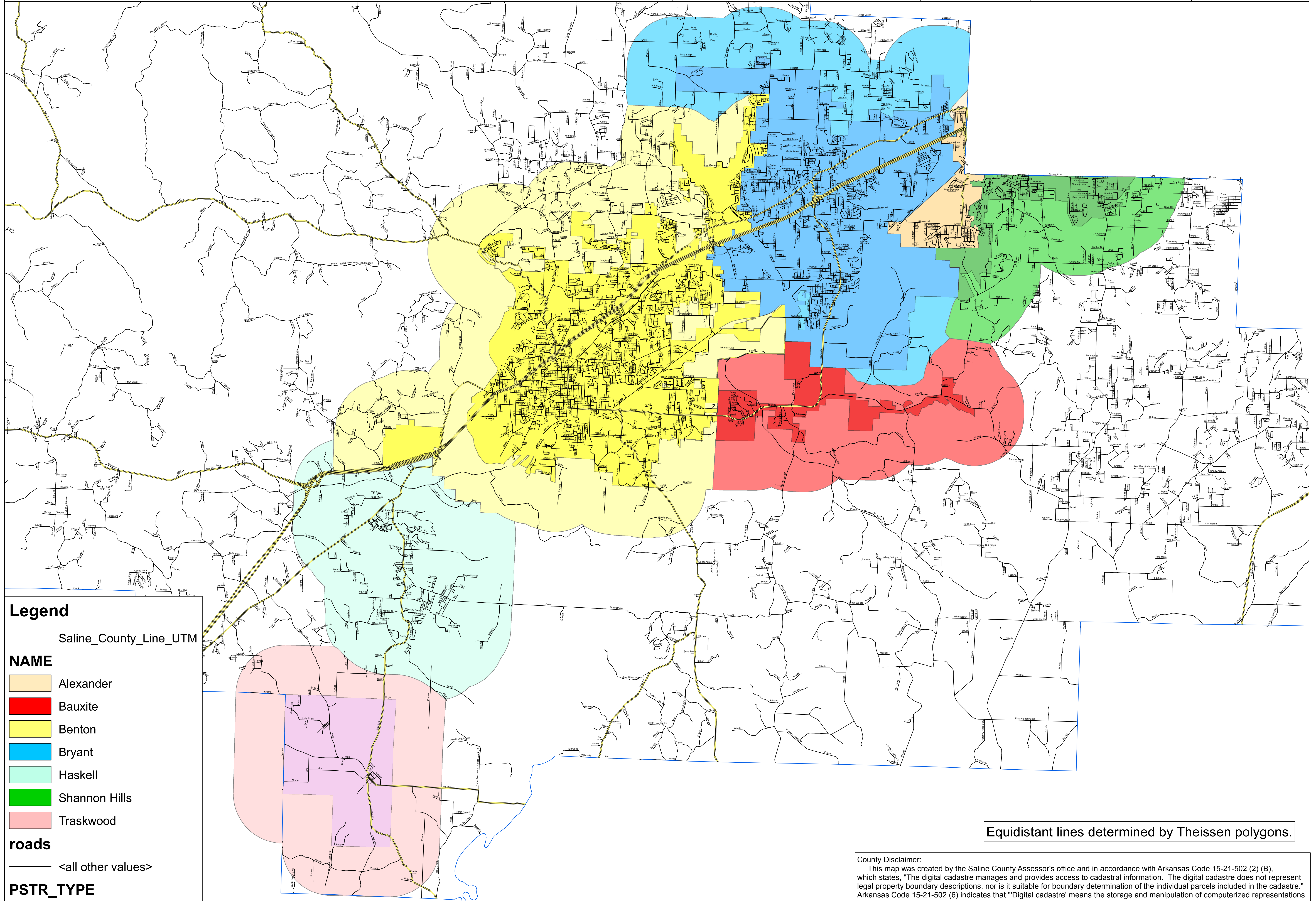


1:44,000

1 inch = 3,666.66667 feet

Map creation date: 08/05/2013



Legend

Saline_County_Line_UTM

NAME

- Alexander
- Bauxite
- Benton
- Bryant
- Haskell
- Shannon Hills
- Traskwood

roads

<all other values>

PSTR_TYPE

- Hwy

Equidistant lines determined by Thiessen polygons.

County Disclaimer:
 This map was created by the Saline County Assessor's office and in accordance with Arkansas Code 15-21-502 (2) (B), which states, "The digital cadastre manages and provides access to cadastral information. The digital cadastre does not represent legal property boundary descriptions, nor is it suitable for boundary determination of the individual parcels included in the cadastre." Arkansas Code 15-21-502 (6) indicates that "'Digital cadastre' means the storage and manipulation of computerized representations of parcel maps and linked data bases."
 The parcel lines shown are considered a graphical representation of the actual boundaries. The Assessor's office is in no way responsible for or liable for any misrepresentation or re-use of this map.